

Elisabetta Villa



Price: **387 € / night**

Licence Number: **1249818**

Guests: **6**

Check-in Hour: **15:00**

Bedrooms: **3**

Check-out Hour: **10:00**

Bathrooms: **2**

Housekeeping: **Twice per week**

Size: **200 m²**

Change of Linen: **Twice per week**

Property ID: **46620**

Car: **Necessary**

Description

Contemporary Villa with Private Pool Above Longos Bay

Elisabetta Villa is a stunning contemporary 200m² retreat perched in tranquil Anemogiannatika, offering breathtaking views over the Ionian Sea. This architecturally designed three-bedroom villa seamlessly blends modern comfort with Mediterranean charm, featuring an infinity pool, multiple terraces, and sophisticated indoor-outdoor living spaces. Just 750 meters from picturesque Longos village, this exclusive property provides the perfect balance of privacy and accessibility for discerning travelers seeking an authentic Paxos experience.

PROPERTY HIGHLIGHTS

Private pool with integrated shallow section and panoramic sea views

Contemporary architecture with floor-to-ceiling windows maximizing natural light

Multiple outdoor living spaces including ancient olive tree garden with romantic lighting

Professional interior design with coastal-inspired décor and premium furnishings

Strategic hillside location offering privacy while remaining 750m from Longos village

Three modern bathrooms with spa-like amenities and heated towel rails

Fully equipped kitchen with breakfast bar and stone-effect countertops

Premium outdoor furniture and multiple dining areas for diverse entertainment options

DESCRIPTION/THE SPACE

Elisabetta Villa unfolds across two meticulously designed levels, offering an exceptional living experience for up to six guests. The upper floor showcases an open-plan living space with floor-to-ceiling windows that frame spectacular sea views. The contemporary living area features comfortable white sofas adorned with designer cushions in coastal blues and sunny yellows, complemented by an elegant orange pendant light that adds warmth to the sophisticated atmosphere.

The villa accommodates six guests in three beautifully appointed bedrooms. The master bedroom features a double bed with an elegant iron frame and brass accents, direct pool access through sliding doors, and an ensuite bathroom with marble-effect tiles. The second bedroom offers a double bed with an upholstered headboard and stunning sea views, while the third bedroom provides two single beds with premium linens and a charming vintage-style dressing table. Each bedroom is equipped with individual air conditioning, quality mattresses, ample storage space, and contemporary lighting fixtures.

Three modern bathrooms showcase spa-like designs with marble-effect wall tiles, walk-in showers with glass enclosures, contemporary fixtures in matte black, heated towel rails, and LED lighting systems. The fully equipped kitchen boasts clean white cabinetry, premium appliances including a full-size refrigerator, built-in oven, ceramic hob, professional extractor hood, and a breakfast bar with modern stools. Stone-effect countertops provide extensive prep space, while a window above the sink frames pool and sea views, making meal preparation a pleasure.

LAYOUT

Upper Level:

- Open-plan living room with panoramic sea views and designer furnishings
- Sophisticated dining area seating six guests with coastal-themed décor

- Fully equipped modern kitchen with breakfast bar and premium appliances
- Master bedroom with double bed, iron frame, and ensuite bathroom
- Main terrace access with infinity pool and multiple seating areas

Lower Level:

- Second bedroom with double bed, upholstered headboard, and sea views
- Twin bedroom with two single beds and vintage dressing table
- Two modern bathrooms with walk-in showers and contemporary fixtures
- Additional kitchenette for convenience
- Direct garden and pool area access with olive tree landscaping

GUEST ACCESS

Guests enjoy exclusive access to the entire villa, including the private infinity pool, all outdoor terraces, garden areas with ancient olive trees, and designated parking space. Digital access system ensures secure and convenient entry, with detailed check-in instructions provided prior to arrival for seamless settlement into your Paxos retreat.

INTERACTION WITH GUESTS

We prioritize your privacy and comfort throughout your stay. Self-check-in is available, allowing you to seamlessly settle into your Paxos retreat at your convenience. Upon request, our friendly hosts will greet you upon arrival, providing a warm welcome and local insights about the island's hidden gems. Throughout your time with us, a dedicated representative from PaxosRetreats will be on hand to assist with any inquiries or needs that may arise.

OTHER THINGS TO NOTE

- The villa's elevated hillside position features multiple levels and stairs that may not suit guests with mobility challenges
- A car is recommended for convenient access to beaches and amenities, though Longos village is within walking distance

LOCATION DESCRIPTION

Nestled in the peaceful village of Anemogiannatika, Elisabetta Villa enjoys an enviable position overlooking the sparkling Ionian Sea and the charming coastline. The picturesque fishing village of Longos lies just 750 meters away, offering traditional tavernas serving fresh seafood, cozy cafes perfect for morning coffee, and a postcard-perfect harbor where colorful fishing boats create an authentic Greek island atmosphere.

Essential amenities are conveniently located within easy walking distance, including the nearest restaurant at 800 meters and convenience store at 750 meters, perfect for morning strolls to collect fresh bread or evening walks for dinner. The cosmopolitan capital of Gaios is 6.3 kilometers away, providing boutique shopping, waterfront dining establishments, vibrant nightlife, and the island's main port. This strategic location offers the perfect balance between peaceful retreat and accessibility to Paxos' attractions, beaches, and cultural experiences.

GETTING AROUND

Car rental recommended for exploring Paxos' hidden beaches and attractions. Private parking available at villa.

GETTING THERE/TRANSIT

Access to Paxos requires sea transfer from Corfu, where the nearest international airport is located.

From Corfu, take a hydrofoil or sea taxi to Gaios port (approximately 1-hour journey). We can arrange private transfers from Corfu Airport to port, car rental services, or taxi transportation from Gaios port to villa (5.2km) to ensure seamless arrival. Ferry connections from mainland Greece are also available during summer months. Note: while we coordinate transfers, car rentals, and sea taxi services, hydrofoil tickets must be arranged independently.

HOUSE RULES

- It is mandatory to respect the maximum occupancy of 6 guests during the whole stay
- Please inform your host as soon as possible of any breakdown, damage, or accident occurring to the property during your stay
- Guests are responsible for any damages beyond normal wear and tear
- Smoking is permitted only outdoors in designated areas
- Parties and events are strictly prohibited
- Pool usage is at guests' own risk; children must be supervised at all times
- Quiet hours observed from 10 PM to 8 AM

PAXOS RETREATS MANAGED

PaxosRetreats directly manages and handles reservations and guest communications for Elisabetta Villa. This service option allows property owners to delegate the booking process and guest communications to PaxosRetreats' professional team.

Amenities

- Air Conditioning
- Air conditioning in all rooms
- Air-conditioning
- Bathroom essentials (Towels, hot water, toilet paper, etc)
- Beach/Pool towels
- Body soap
- Bottle of water
- Champagne or wine
- Cleaning available during stay
- Cleaning included
- Coffee machine
- Cooking basics (Pots & pans, oil, salt, pepper etc)
- Cooking essentials (Bowls, chopsticks, plates, cups etc)
- Cooking hob
- Cutlery/Crockery
- Detached
- Dining area
- Dining table
- Dishwasher
- Fire extinguisher
- Fireplace
- First aid kit
- Flat screen TV
- Freezer
- Fresh sheets & towels
- Fridge
- Fully equipped kitchen
- Hair dryer
- Hair-dryer
- Hangers
- Iron
- Kettle / Water Boiler
- Linen
- Long stay
- Outdoor furniture
- Outdoor shower
- Oven
- Parking on site (Free)
- Patio / Veranda
- Pool view
- Sea view
- Shampoo
- Shower
- Shower gel
- Sun loungers
- Swimming pool private
- Toaster
- Toiletries
- Trash cans
- Upper floors accessible by stairs only
- Washing machine
- Welcome hamper
- WiFi
- WiFi (Free)
- Wine glasses

Sleeping Arrangements

Bedroom 1
1 Double

Bedroom 2
1 Double

Bedroom 3
2 Single

Terms and Conditions

Cancellation Policy:

- 100% refund if you cancel at least 2 months before check-in.
- 50% refund if you cancel at least 1 month before check-in.
- No refund if you cancel less than 1 month before check-in.
- Paxosretreats.com Service Fee (3%) is non-refundable.
- All cancellations must take place by 12midday according to the Central European Time (CET), on the appropriate day.

Other Rules:

- It is mandatory to respect the maximum occupancy of 6 guests during the whole stay
- Please inform your host as soon as possible of any breakdown, damage, or accident occurring to the property during your stay
- Guests are responsible for any damages beyond normal wear and tear
- Smoking is permitted only outdoors in designated areas
- Parties and events are strictly prohibited
- Pool usage is at guests' own risk; children must be supervised at all times
- Quiet hours observed from 10 PM to 8 AM

Smoking Allowed: No

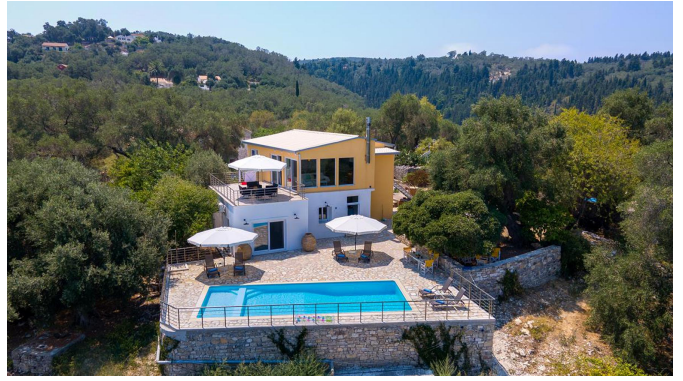
Party Allowed: No

Pets Allowed: No

Children Allowed: Yes

Photos







Showing first 18 photos.